



# NATIONAL INSTITUTE OF TECHNOLOGY RAIPUR

(An Institute of National Importance)

## Placement details for 2021-22 as on 04.08.2022

UG Programmes							
S. No.	Branch	*Students Eligible and willing for placement	Total Offers Received		Students Placed (Single Offer)		
			In No.	In %	In No.	AY 2021 (in %)	Current AY (In %)
1	Bio Medical Engineering	37	21	56.76	21	35.71	56.76
2	Bio Technology	32	24	75.00	24	33.33	75.00
3	Chemical Engineering	55	55	100.00	54	63.83	98.18
4	Civil Engineering	81	51	62.96	51	31.51	62.96
5	Computer Science Engineering	87	78	89.66	78	89.29	89.66
6	Electrical Engineering	68	70	102.94	62	71.05	91.18
7	Electronics & Communicaiton Engg.	85	73	85.88	66	83.10	77.65
8	Information Technology	91	101	110.99	85	92.77	93.41
9	Mechanical Engineering	94	92	97.87	85	67.95	90.43
10	Metallurgical & Materials Engg.	69	63	91.30	60	77.55	86.96
11	Mining Engineering	70	65	92.86	62	65.38	88.57
Total		769	693	90.12	648	69.32	84.27

1	B.Arch.						
---	---------	--	--	--	--	--	--

PG Programmes							
S. No.	Branch	*Students Eligible for placement	Total Offers Received		Students Placed (Single Offer)		
			in No.	in %	in No.	AY 2021 (in %)	Current AY (In %)
1	M. Tech. Applied Geology	17	1	5.88	1	25.00	5.88
2	M. Tech. Chemical	3	0	0.00	0	0.00	0.00
3	M.Tech. Civil Engineering	22	8	36.36	8	4.76	36.36
4	M.Tech. Electrical Engineering	27	5	18.52	4	4.76	14.81
5	M.Tech. ECE	22	2	9.09	2	23.53	9.09
6	M.Tech. Information Technology	23	15	65.22	14	52.63	60.87
7	M.Tech. Mechanical Engineering	38	16	42.11	16	6.06	42.11
8	Master of Computer Application (MCA)	65	69	106.15	70	64.41	107.69
Total		217	116	53.46	115	31.35	53.00

M.Tech-

152

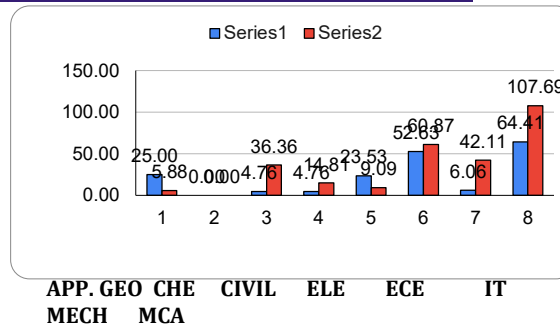
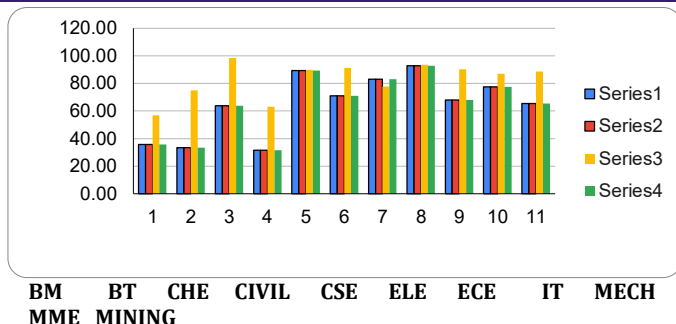
45

Overall Placement Summary :		Total Offers			Single Offer		
		in (No.)	in (%)		in (No.)	AY 2021 (in %)	Current AY (In %)
[A]	Total placement offers received (UG + PG) :	809	82.05		763	61.53	77.38
[B]	Total placement offers received for UG:	693	90.12		648	69.92	84.27
[C]	Total placement offers received for PG:	116	53.46		115	31.35	53.00
[D]	Overall Average Salary : [Average CTC for UG : LPA and PG : LPA]	10.12 LPA					
[E]	Highest and Lowest Salary Package (CTC) : LPA and LPA respectively.	Highest: 0 LPA		Lowest: 0 LPA			
[F]	Total No. of companies conducted placement process (including PPO) :	0					

\* **Eligibility Criteria** :- Throughout 60% (10th, 12th and current CPI) with no standing backlog.

Placement % Comparison B.Tech: 2021-2022

Placement % Comparison M.Tech & MCA: 2021-2022



Year 2021-22	Year 2022-23	
Total Eligible (L	769 Total Eligible (L	988
Total Eligible P	15 Total Eligible P	19
Total Selection PWD	Total Selectio	5